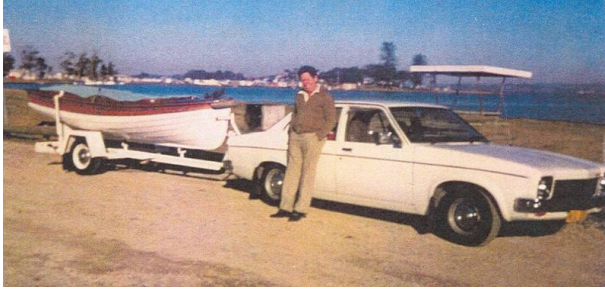


# Basic Detail Report

---



## Little Nipper

**Vessel number**

HV000468

**Primary Maker**

N and W Shevill

### Description

LITTLE NIPPER was identified from the Shevill's builders plate that is featured on the hull's transom. It had been abandoned at the NSW Maritime Services dock on Goat Island, Sydney in 1960, when Jack Hubbard, one of the foreman shipwrights, noted its origins from the plate and decided it could be restored. It was clinker planked in New Zealand kauri, a timber renowned for its longevity even when not well maintained, so it had good potential to be rebuilt. At 3.66m long and 1.52 m wide, and powered by a Chapman Pup single cylinder petrol engine, (also known as a Blaxland Chapman) it was a compact little craft, which was the principal aim of the builders. They and other small yards around the country had access to mass produced, simple petrol engines and could put these in a basic craft on a trailer, and all at a price that made them more widely available to the general public. This opened up recreational boating to people who now lived in suburbs well away from the water, but had a car. It was the beginning of a trend that expanded as private cars became more common, launches became small powerboats, materials evolved and outboards superceded small inboards. Hubbard happily used LITTLE NIPPER as he called it for fishing on Sydney Harbour and Lake Macquarie into the 1980s, just as the craft was intended to do in the 1930s when it was built and sold from the Shevill brother's factory at Sans Souci, on Botany Bay NSW.

### Dimensions

Vessel Dimensions: 3.66 m x 1.52 m x 0.56 m (12 ft x 5 ft x 1.85 ft)